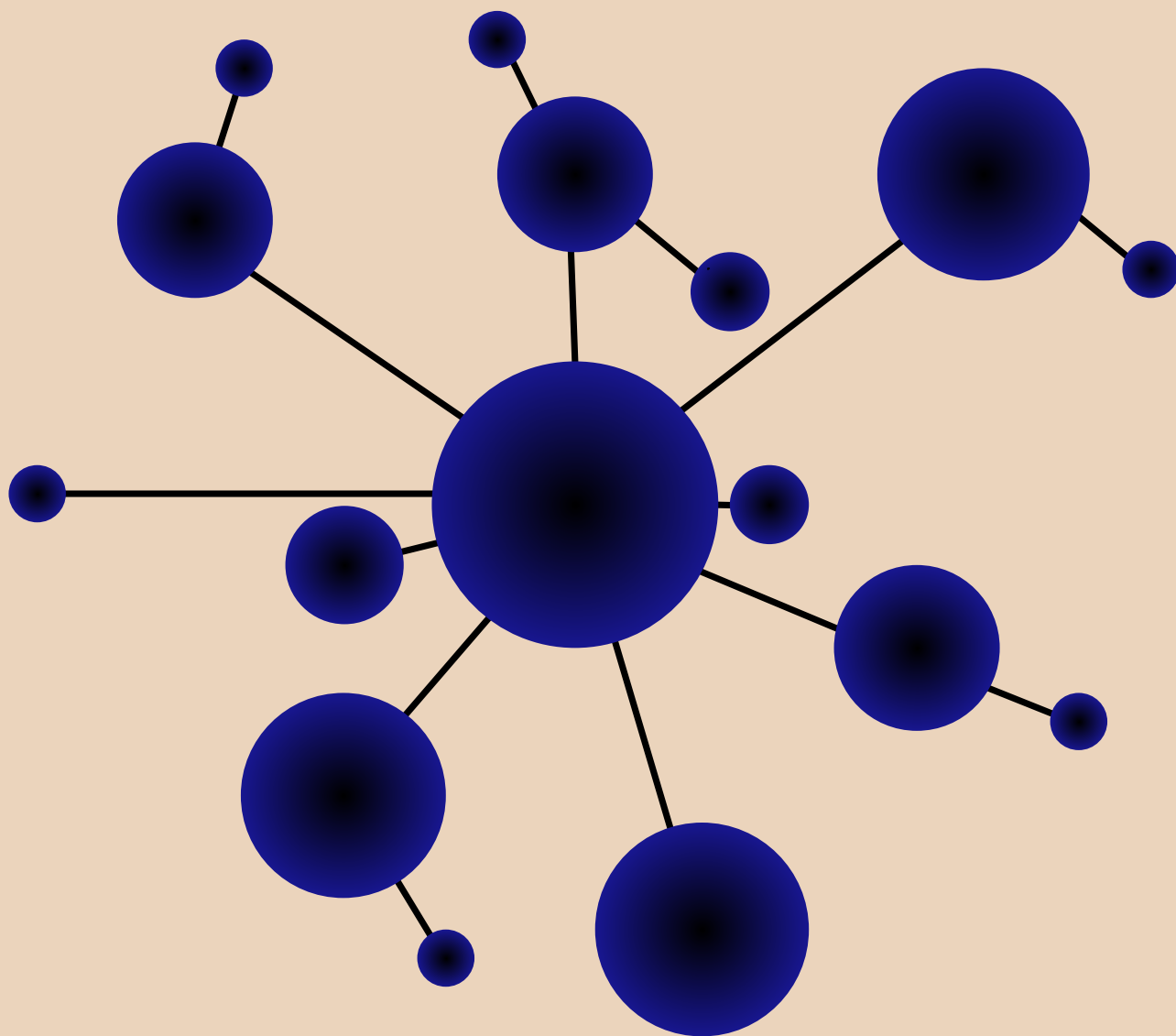


TIMESCAPE



YOUTH EXCHANGE
21. APRIL - 2. MAY



Na tento projekt pojeděš s

•mladi!nfo
www.mladiinfo.cz



Vyslající organizací pro české účastníky je Mladiinfo ČR. Co to znamená?

- Na tvé cestě tě budeme podporovat a se vším ti pomůžeme.
- S vybranými účastníky si domluvíme společný videocall, kde se česká skupina seznámí, vymění si kontakty a naplánuje společnou cestu.
- Společně vymyslíme plán propagace projektu, např. příspěvky na sociálních sítích či na našem webu.
- Kontaktovat nás můžeš na **kancelar@mladiinfo.cz**.

Neustále hledáme nové dobrovolníky!

Baví tě psát články, sleduješ trendy na sociálních sítích, zajímáš se o chod neziskové organizace jako je Mladiinfo? Neustále **hledáme šikovné lidi**, kteří mají zájem se zapojit. Dej nám o sobě **vědět**

vědět



WHAT AND WHY TIMESCAPE?

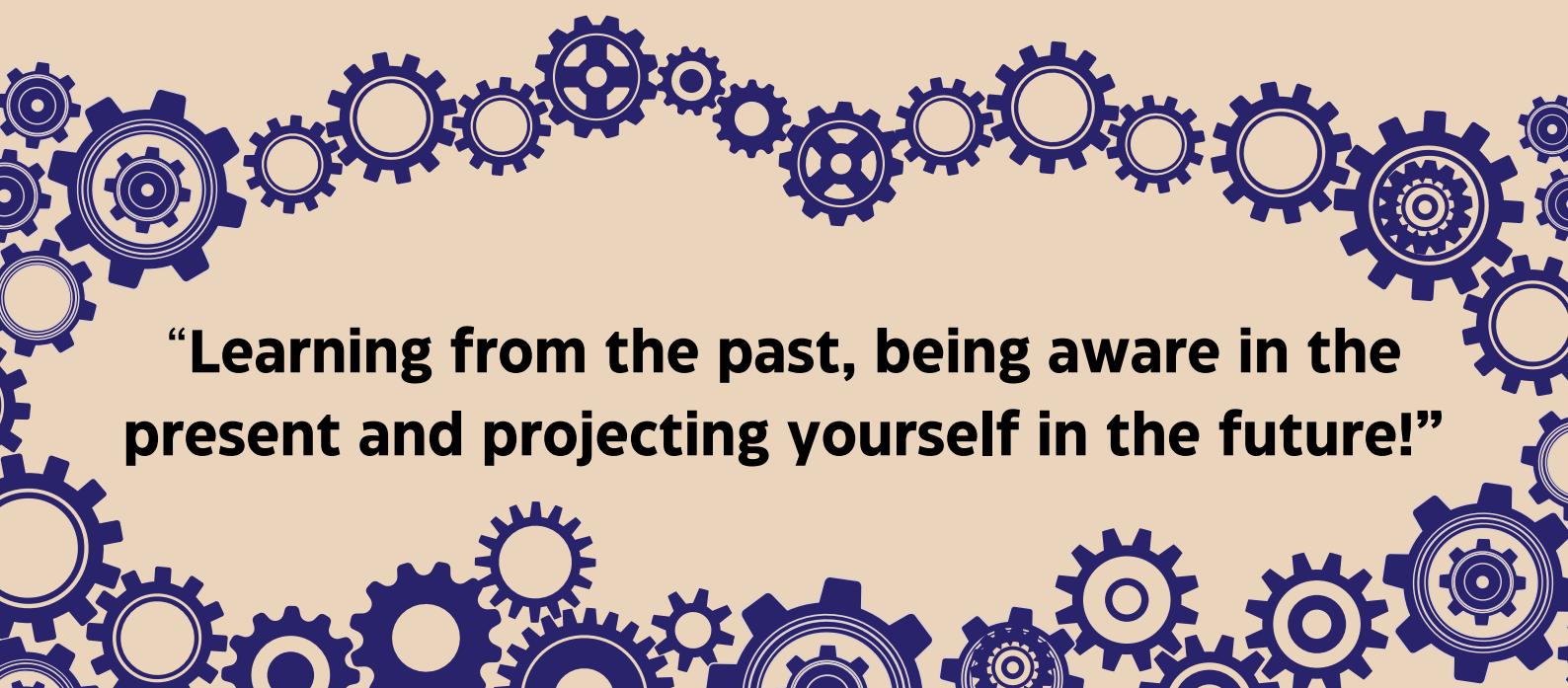
Have you ever wanted to travel back in time and change something in your past? Or maybe travel into the future and see how you are as a person a few years, maybe decades from now?

The Timescape youth exchange will take you on a journey through time!

In this program, you will have the chance to explore new perspectives on your life path. It offers a space for participants to confront their fears, rethink situations impacting their lives, and find ways to overcome failures, challenges, and obstacles. By connecting and interacting with others, you will gain fresh insights into how to navigate life's hurdles.


How does time travelling work?

Through Cherry's signature 'learning by doing' approach! Activities like video making, theatre, teamwork, and high-energy, adrenaline-filled experiences will empower you to face challenges head-on and grow through action. Timescape will be a space to navigate your own challenges by stepping out of time and into new perspectives!

A decorative border of blue gears of various sizes and orientations, arranged in a wavy pattern across the bottom of the page.

“Learning from the past, being aware in the present and projecting yourself in the future!”

● ———— ●



How does the past shape us? How to let go of the past and be present in the moment? How to let go of our fears and tackle different challenges and obstacles in our lives? What can I do right now for a better future?

These are different questions, which we will work with during the exchange, in order to provide a better insight into ourselves and our strengths. The setting of the exchange will be more introspective, but we will also focus on working in teams, cooperating with others, communication and taking initiative to control our feelings and actions in the future.

● ———— ●

The path to becoming a time traveller

As in every Cherry exchange, there will be a **build-up to the main activity** of the project. For **a few days and nights** you will be challenged to time travel into a **different time and place**, but the time machine sometimes does not allow to take **phones or money** with you on the travels. You will be faced with **different assignments and problems**, which will test your strengths and capabilities! We will have a lot of **outside activities**, some might last **hours**, some more days! Because the exchange is in April, **the weather will be cold**, so make sure you have suitable time travelling equipment with you!

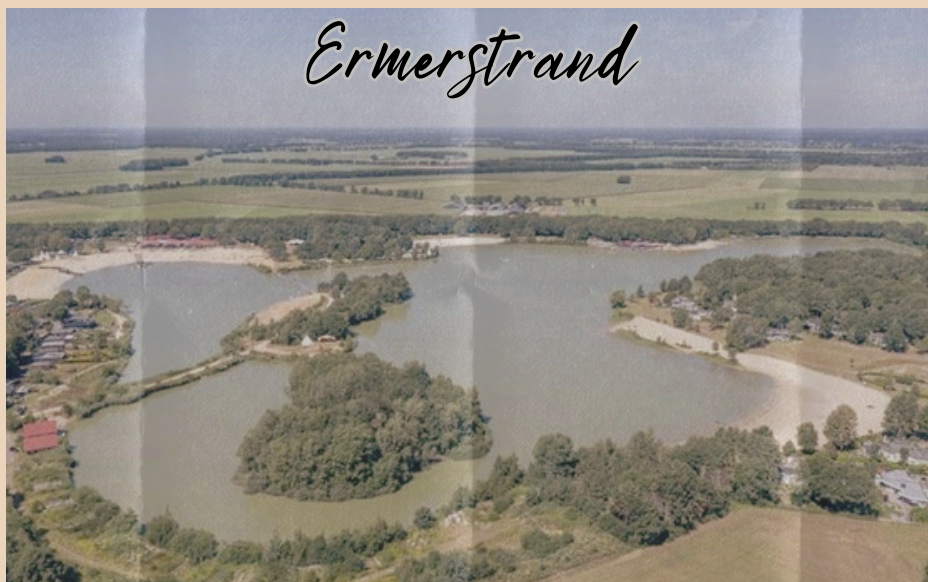
We will also have **national evenings**, which means that each participating country needs to **plan and prepare their dinner** (something traditional) and some **fun activities** in the evening!



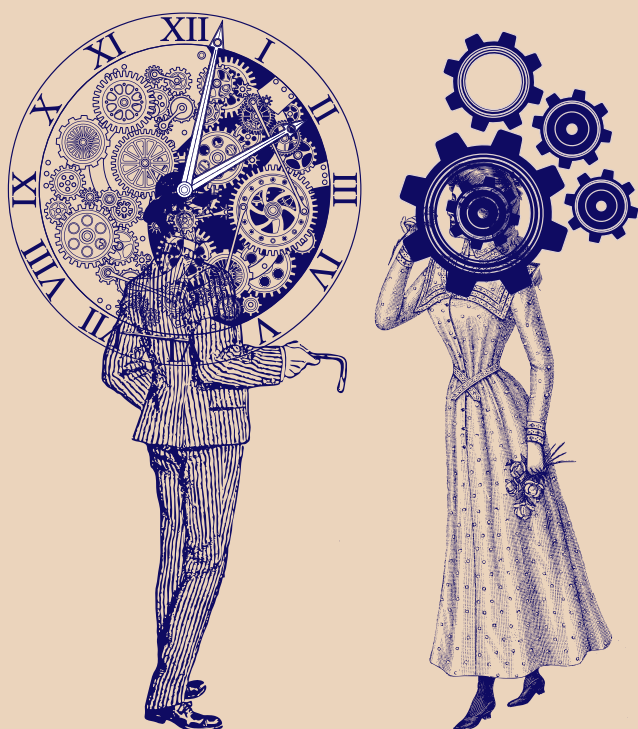
WHEN AND WHERE?

The youth exchange “Timescape” will take place **from the 21st of April to the 2nd of May 2025** in **Ermerstrand**.

Ermerstrand is a serene retreat in the northeastern Netherlands, nestled near the charming village of **Erm**. This idyllic location features a tranquil lake surrounded by the beautiful Dutch countryside. It will be a perfect place for this exchange, where we will go a bit deeper, personal and take the beautiful location in our advantage.



In total, the exchange will be **12 days long!** The **arrival day** will be **on the 21st of April** and the **departure day on the 2nd of May**.



More information about travelling, arriving to the location, accommodation, what to pack and what to bring will be provided in the Practicalities infopack, which you receive once you get accepted to the exchange!

WHO IS IT FOR?

The age limit for this exchange is **from 18 to 25**. The number of participants per country is **5 (4 youngsters + 1 group leader)**. The group leader should be preferably 18+ and if possible, already have experience with joining a youth exchange. The participating countries are **the Netherlands, Italy, Portugal, Slovenia, Spain, Czech Republic, Romania and Poland**.

It is important that the participants are prepared for active cooperation, ready to face different fears and challenges, be open to get to know different cultures and ready to step out of their comfort zones. As we will also focus on ourselves individually, it may seem scary, but remember that we are in it all together and we are there to support you!

In Cherry we believe, that part of growing as a person and taking initiative is also **doing everyday chores**. That is why the participants will also be **taking care of the accommodation** during the exchange, You will also take care of **all the meals**, as you will be preparing it in groups by yourselves.

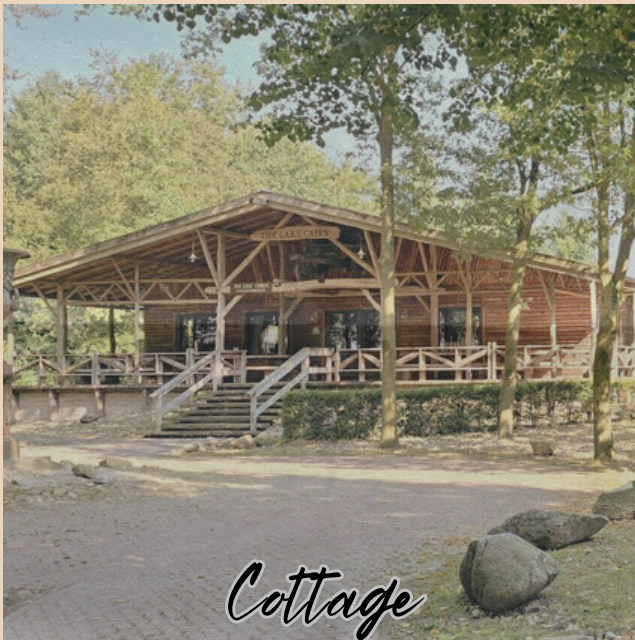


If you have any questions, feel free to contact the organisers!

contactcherrygroup@gmail.com

THE ACCOMMODATION

The exchange will be held in a **beautiful cottage next to the lake in Ermerstrand**. In the same place we will also be executing our program and get to explore the surrounding area as well. The cottage is decorated in a vintage, western style, which truly brings out a sense of travelling through time. There is a big **common space** for hanging out, which also serves as the **dining area**. It also includes **many shared bedrooms** and a **spacious kitchen**.



Cottage



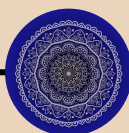
Common area



Kitchen



Bedrooms



TRAVELLING

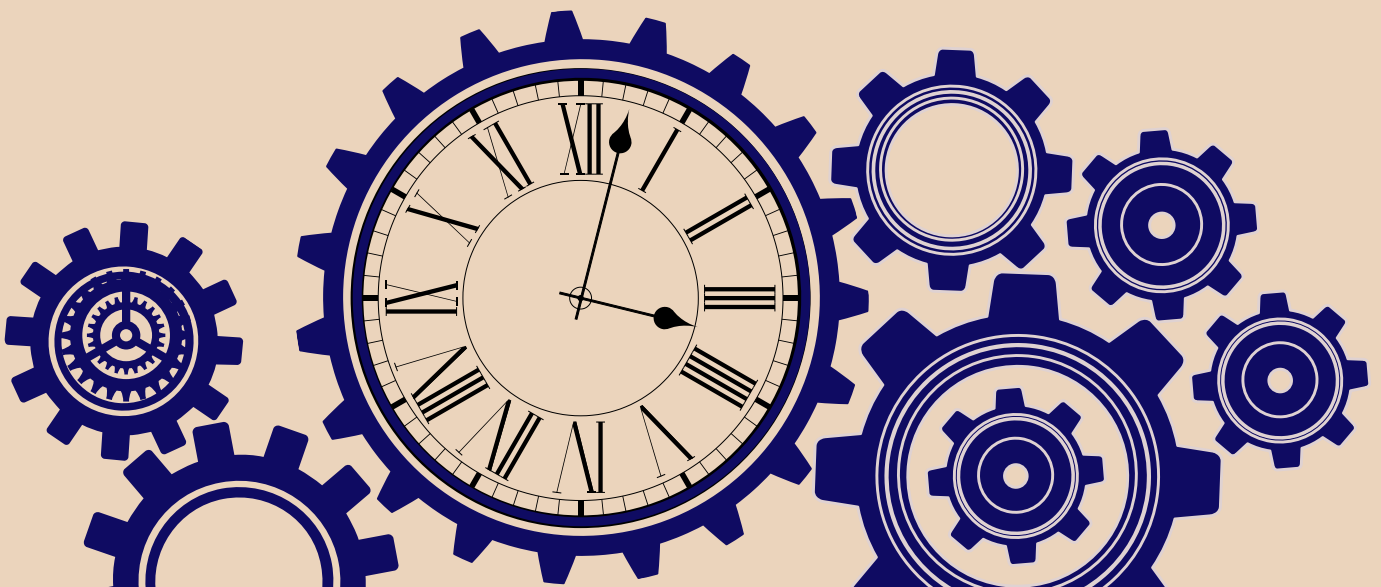
Your time travelling costs will also be **reimbursed according to the chart below**. The reimbursement will be done after the exchange!

500-1999km	309€
500-1999km	417€*
2000km+	395€
2000km+	535€*

*** This amount applies if you choose Green travel**

After receiving the confirmation of participation, please inform us about your arrival and departure times. **Do not purchase any tickets before we confirm your application!** Your presence is required during the entire duration of the exchange. It is not possible to arrive to the accommodation earlier or depart later, but for the plane tickets it is not a problem.

All the costs for the accommodation and meals are covered by us, but there is a participation fee of 50 Euros, which is paid upon arrival. If you use Green travel, the participation fee is 20 Euros!





If you want to apply to our exchange and become a time traveller,

Apply here!



please fill out this Google form.